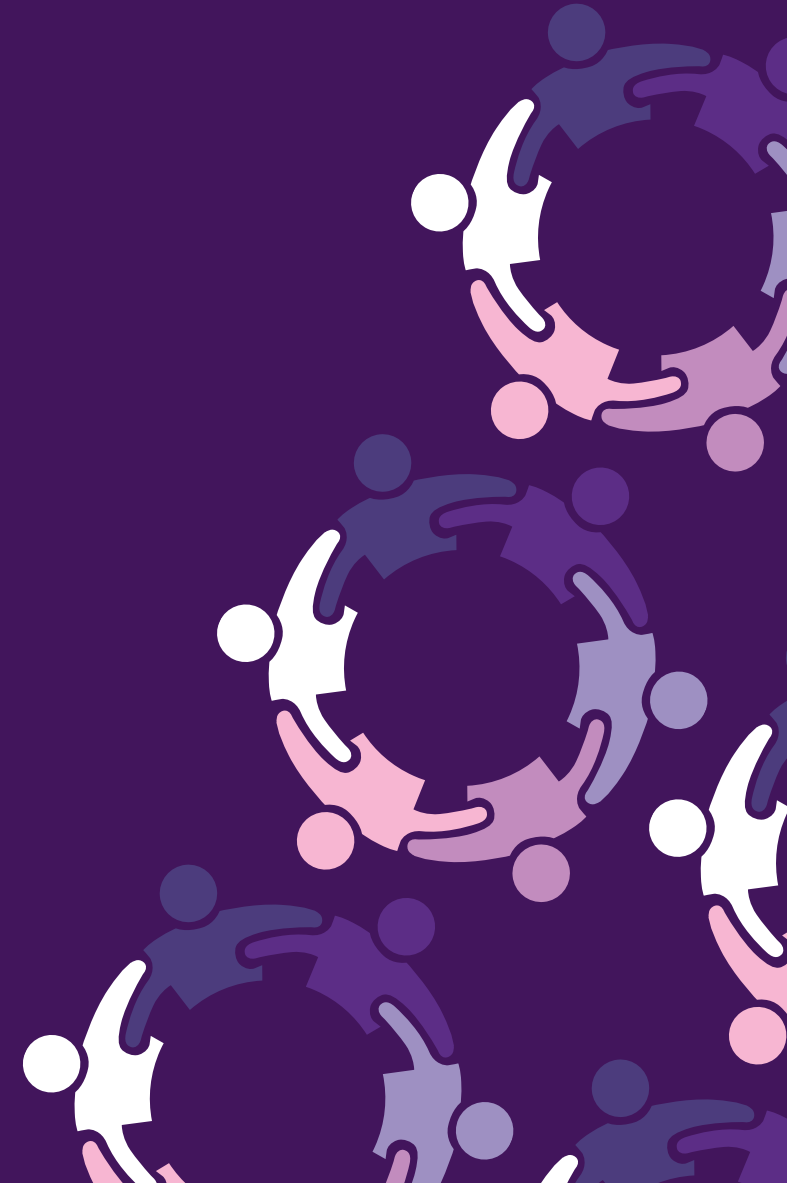


Strategic Board Meeting

Setting our Priorities

Friday 8th December
1.00pm to 3.00pm
Croydon Clocktower



✉ Send us a message ☎ 0208 726 6000



[About Us](#)

[Education
Partnership](#)

[Our Services](#)

[Courses](#)

[Events
Calendar](#)

[News](#)

[Resources](#)

[Recruitment](#)

[Contact Us](#)

Priorities

[Home](#) | **Priorities**

Creating the PRIORITIES

Applying the GROW model



What are our GOALS?

Results of the MentiMeter survey

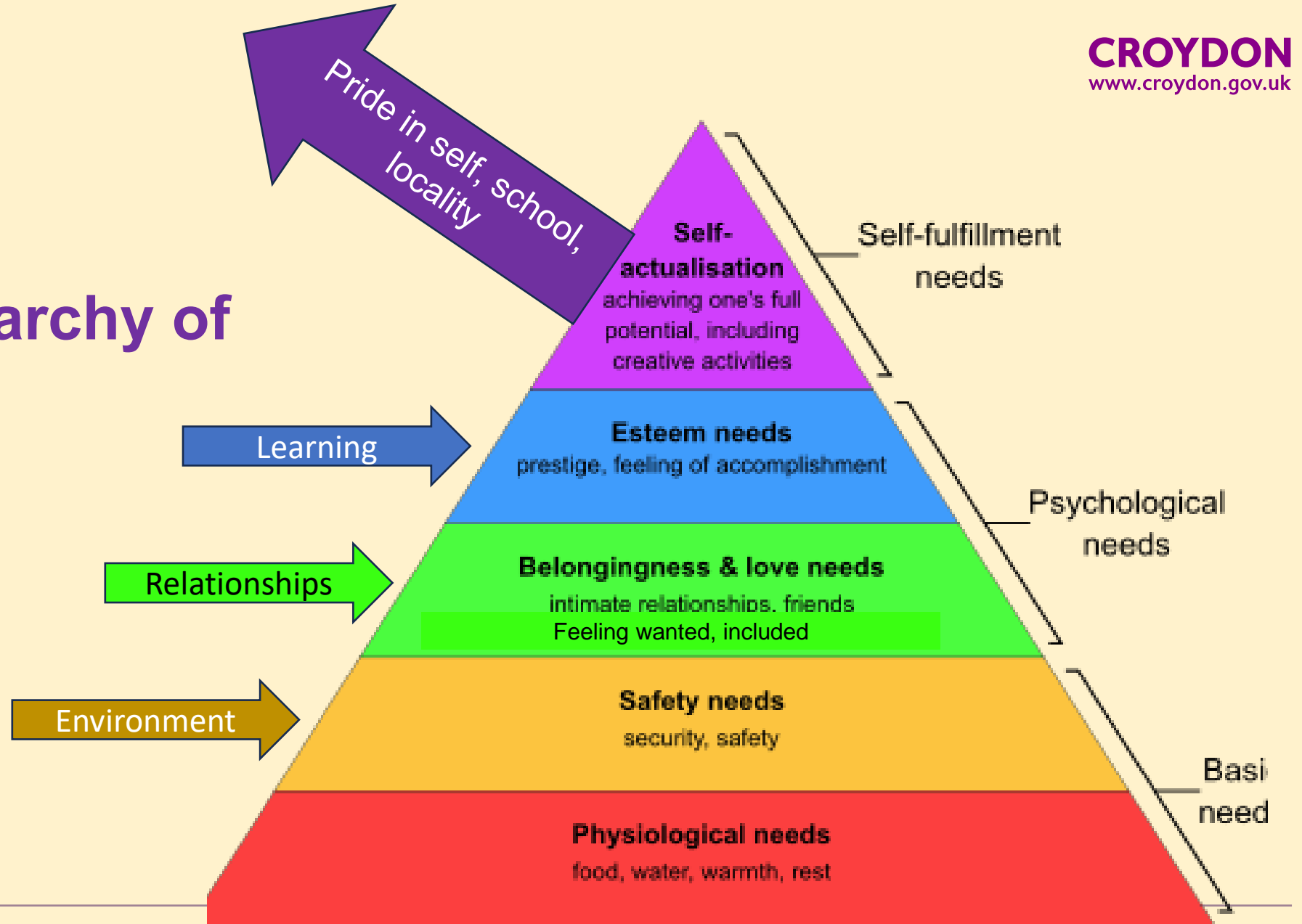
- Restore Pride in Croydon by its young people (6 votes)
 - CYP have pride in living and going to school in Croydon (2 votes)
 - Recruitment and Retention (5 votes)
 - Recruitment & retention, especially SEND & behaviour experience (3 votes)
 - Mental Health and well-being of children, staff and families (2 votes)
 - Invest in mental health support for schools and reform CAMHS (2 votes)
 - Support for those children with SEND (2 votes)
 - Early identification of SEND, better collaboration with SEND schools (2 votes)
- • Optimising alternative forms of funding (4 Votes) ← links to →. [Schools Forum?]

How do we grow pride
in the borough & its
schools by children &
young people?

It starts with feeling
that you belong



Maslow's hierarchy of needs



Supported Challenged Enabled **BELONGING** Understood Included Barriers

Recruitment & Retention of staff

Well-being & Mental health

Literacy & Meta-Learning

Inclusion & Removing Barriers

Youth Safety

CAMHS

Early Help

Borough Strategies

Early Years

SEND strategy

Learners' voices, family voices, community voices

Solution-Focused **Cross-Agency & Partnership Work** Sharing good practice

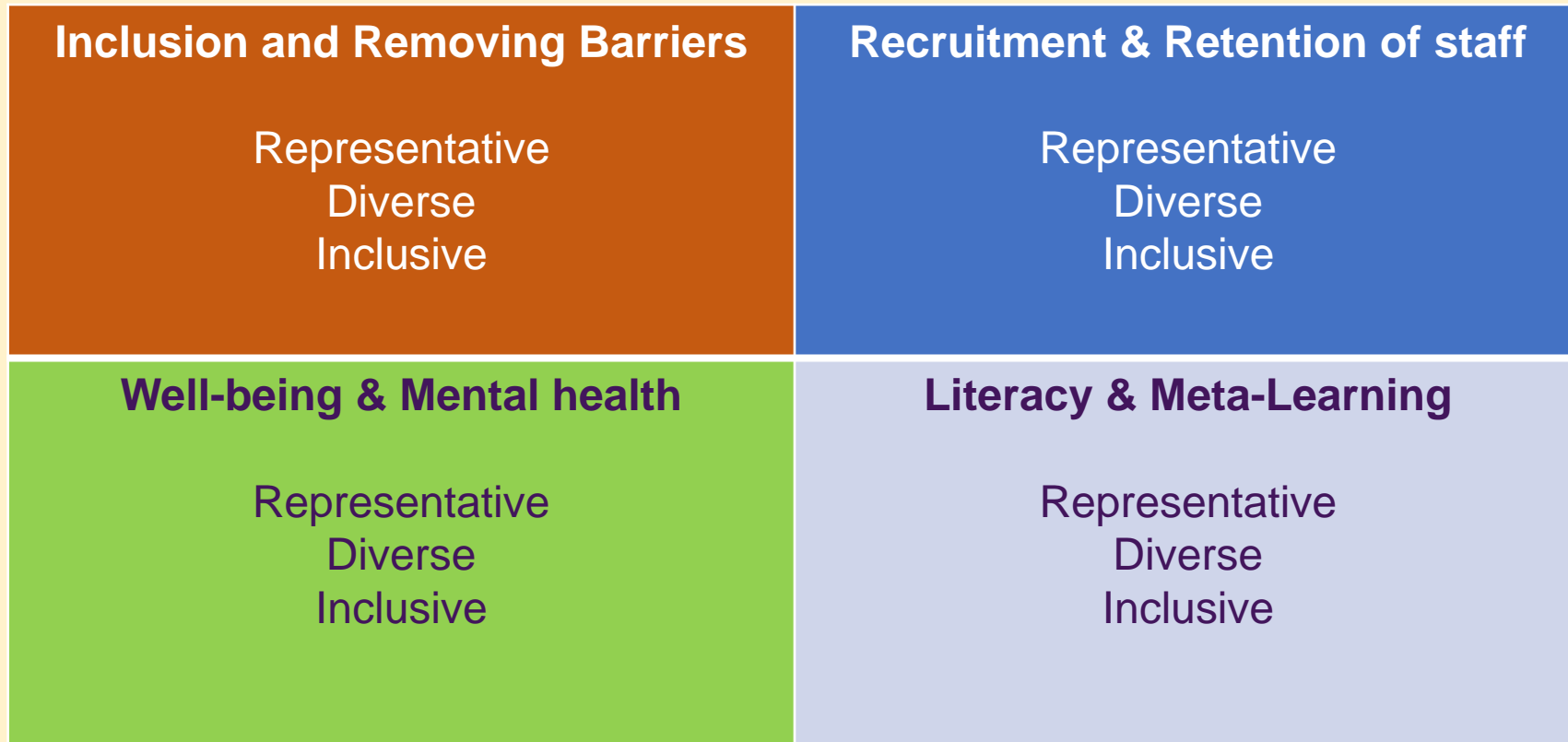
Outcomes & Impact

Outcomes & Impact

Outcomes & Impact

Outcomes & Impact

discrete work-streams & working groups



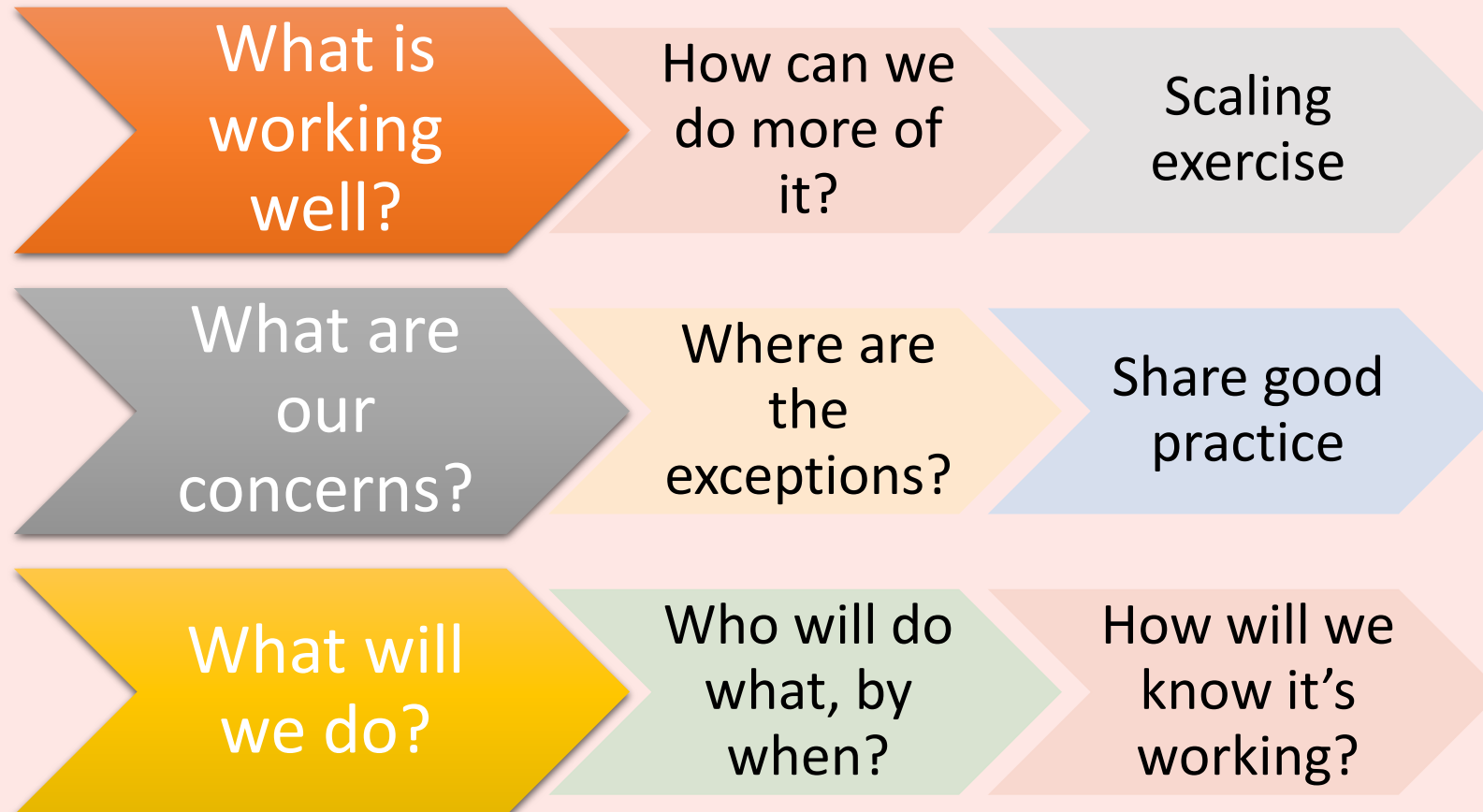
How can we make a real difference?

e.g. Move away from reinforcing disadvantage
and Adverse Childhood Experiences ...



...to creating **Positive Childhood Experiences.**

A solution-focused approach



Break-out time!

Other/EY
and
independent

Secondary/
Special/FE/HE

Primary